

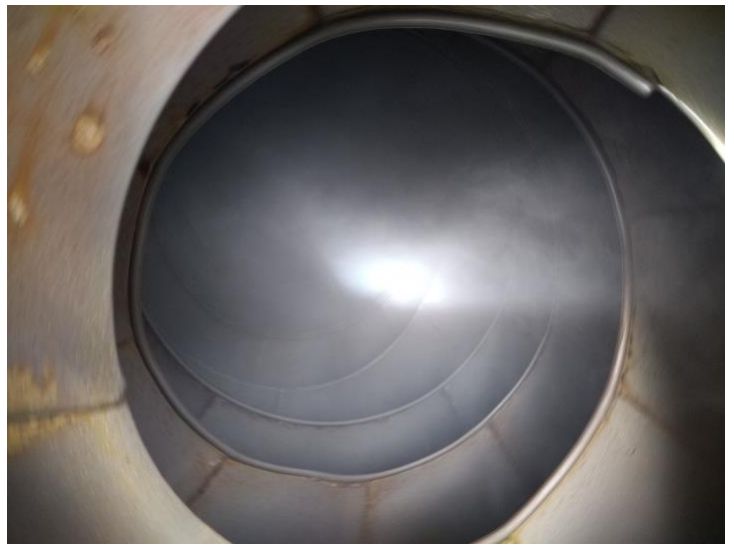
# Slipcoat™ IRC™

Non-Stick Coating for the Ready-Mix Concrete Industry



Nothing Sticks to Us





## Slipcoat™ IRC™

SLIPCOAT™ IRC™ is a 100% environmentally friendly non-stick coating designed for the ready-mix concrete industry. It is revolutionary in that it prevents materials buildup in central mixers and mixer truck drums, chutes, hoppers and aprons. Use of the product significantly reduces maintenance requirements and increases equipment life span.

### PRODUCT OVERVIEW:

- 99.8% biodegradable, environmentally friendly and certified USDA Bio-Preferred
- Prevents buildup and reduces cleaning time in the central mixer, chute, hopper and apron – significantly reduces the need to enter the drum and the need for chipping and hammering
- 95% reduction in buildup inside the mixer drums
- 50% reduction in cleaning times
- No need for cleaning between loads – ideal for scrap and go jobs
- Central mixers require only one application after end of day cleaning
- Trucks require only one application after end of day cleaning
- Application time for central mixers is no more than 5-10 minutes
- Application time for trucks is 4-6 minutes.
- Application volume for trucks is about 0.2 gallons per day.



## Slipcoat™ IRC™

REDUCE CLEANING TIMES BY UP TO 50% AND REDUCE MATERIALS BUILDUP INSIDE THE DRUM BY UP TO 95%.

Slipcoat™ IRC™ will not affect the integrity of the concrete it comes in contact with, will not damage painted surfaces and is safe to use in confined spaces and environmentally sensitive areas.

Ideal for the most difficult conditions, including short pours, cured loads and scrape & go jobs.

Application takes as little as 5 minutes, once per day following end of day cleaning.

# FREQUENTLY ASKED QUESTIONS



## **Does SLIPCOAT™ IRC™ require mixing or other preparation?**

No, SLIPCOAT IRC™ is delivered ready to use. The product requires no mixing, dilution or curing time.

## **Can SLIPCOAT IRC™ be applied indoors and in confined spaces?**

Yes, SLIPCOAT IRC™ is non-toxic, non-hazardous and has no harmful fumes or vapors.

## **How much SLIPCOAT IRC™ is needed for a given surface area and how often does it need to be applied?**

Application rate ready mix truck drums is about 0.2 gallons. Application volumes for other uses, such as forms and molds, is about 1 gallon per 1,000 square feet.

## **Will SLIPCOAT IRC™ damage paint?**

No, SLIPCOAT IRC™ will not have any effect on painted surfaces.

## **Does SLIPCOAT IRC™ contain any carcinogens or reproductive hazards?**

No. SLIPCOAT IRC™ is manufactured following strict health, safety and environmental guidelines.

## **Will SLIPCOAT IRC™ work under extreme winter conditions?**

Yes, SLIPCOAT IRC™ has been proven effective in temperatures exceeding -40°F.

## **How can I get started with SLIPCOAT IRC™?**

Please visit our storefront at [www.slipcoats.com](http://www.slipcoats.com) or our website at [www.globalbarrierservices.com](http://www.globalbarrierservices.com). You can also contact us at [info@globalbarrierservices.com](mailto:info@globalbarrierservices.com) or by telephone at (949) 542-7440 for more information.

# THE READY-MIX CONCRETE SOLUTION



## Global Barrier Services, Inc.

1001 Avenida Pico, Suite C-433,  
San Clemente, California 92673  
Tel. 949 542 7440

[info@globalbarrierservices.com](mailto:info@globalbarrierservices.com)

[www.slipcoats.com](http://www.slipcoats.com)

[www.globalbarrierservices.com](http://www.globalbarrierservices.com)

